



# HIGH SCHOOL BOUNDARY ADJUSTMENT

April 9, 2018  
Board Workshop



## **POINT OF CLARIFICATION REGARDING GRANDFATHERING:**

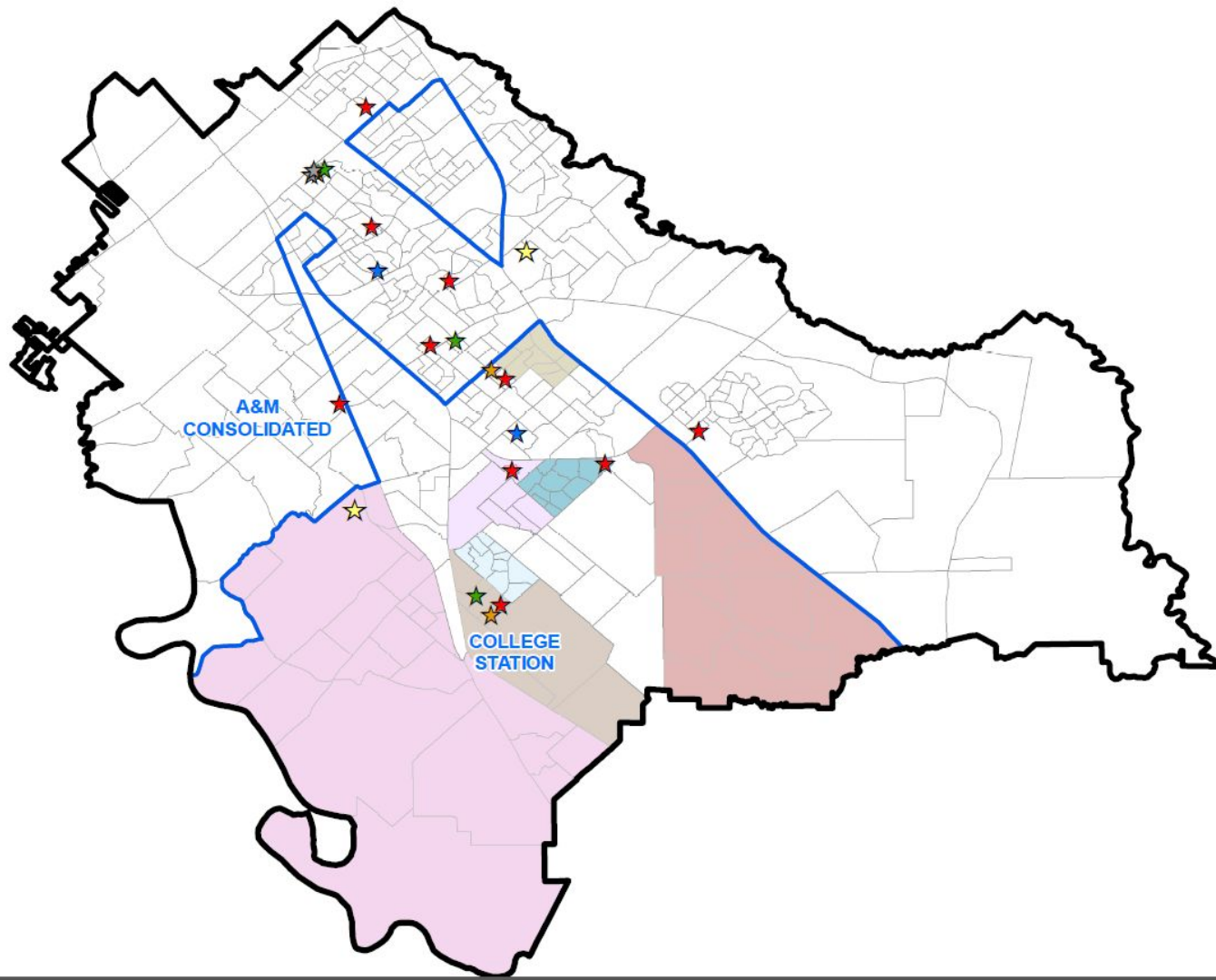
- The current recommendation would allow all CURRENT high school students to remain at the high school to which they are zoned now. The new attendance zones will not take effect until the 2019-2020 school year, meaning current 9th and 10th graders would have the opportunity to grandfather when they are juniors and seniors in 2019-2020.



# ***DATA REQUESTS***

# *Table of Neighborhoods*

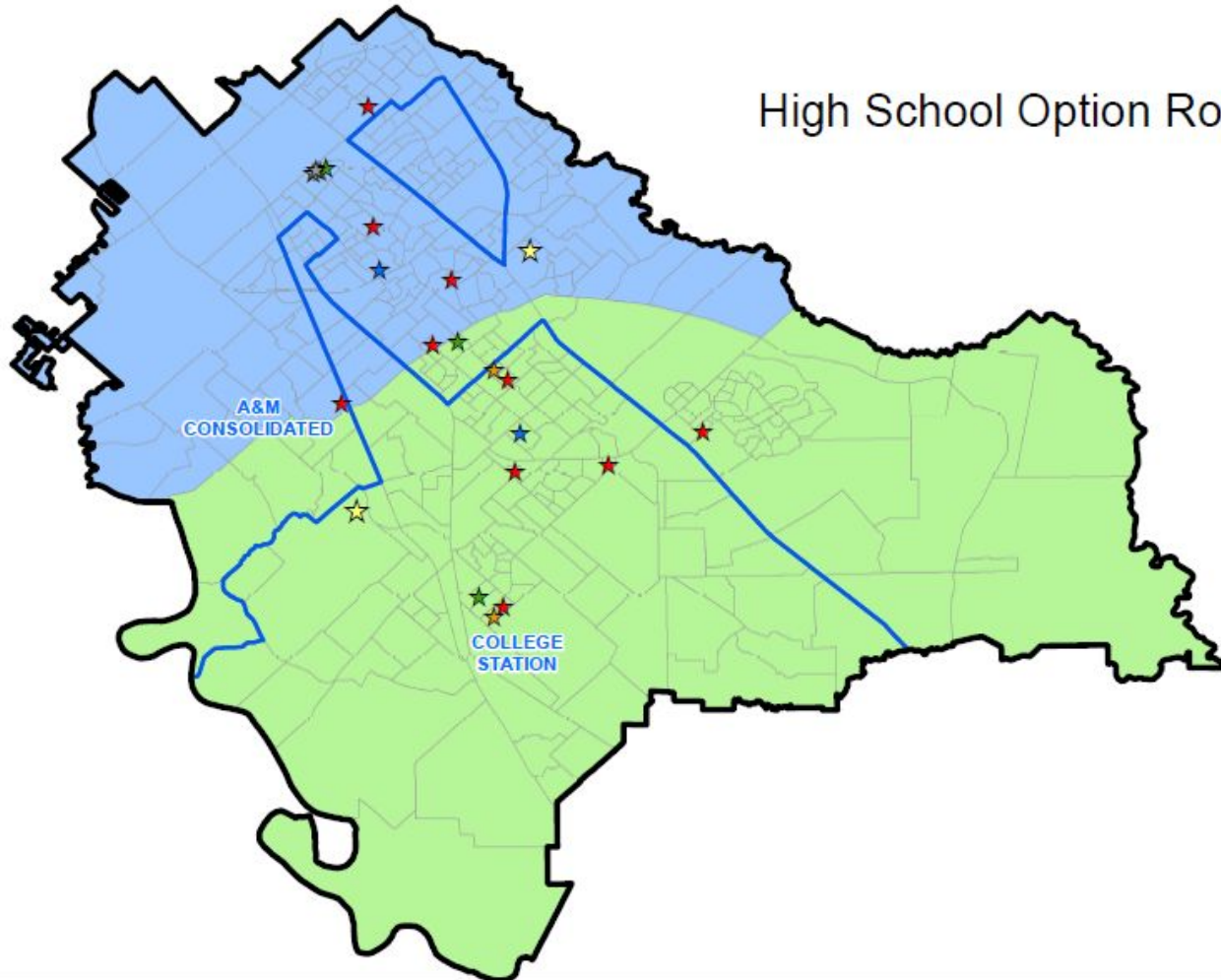
<b>School Year</b>	<b>Nan/IL</b>	<b>West Side</b>	<b>East Wellborn Road</b>	<b>Creek Meadow</b>	<b>Castle-gate 1</b>	<b>CG 2 Brewster</b>	<b>Mid-Twn <u>Notch</u></b>
2019-20	136	191	45	106	180	244	128
2020-21	140	189	47	113	176	270	127
2021-22	151	195	51	119	182	286	129
2022-23	165	212	59	129	197	306	139
2023-24	173	218	64	134	202	317	144
2024-25	183	229	70	140	210	331	151
2025-26	185	229	71	140	210	330	151
2026-27	192	235	73	144	216	338	153
2027-28	194	238	74	145	218	342	153





# ***EAST-WEST LINES***

# High School Option Rock Prairie Ro



## COLLEGE STATION ISD

### High School Option Rock Prairie Ro

30.5%

SCHOOL	8	9	10	11	12	8TH-11TH	9TH-12TH	CAPACITY	UTILIZATION	ED	%ED
A&M CONSOLIDATED	404	413	370	367	388	1,554	1,538	2,350	65.4%	717	46.6%
COLLEGE STATION	559	581	545	533	527	2,218	2,186	1,950	112.1%	353	16.1%

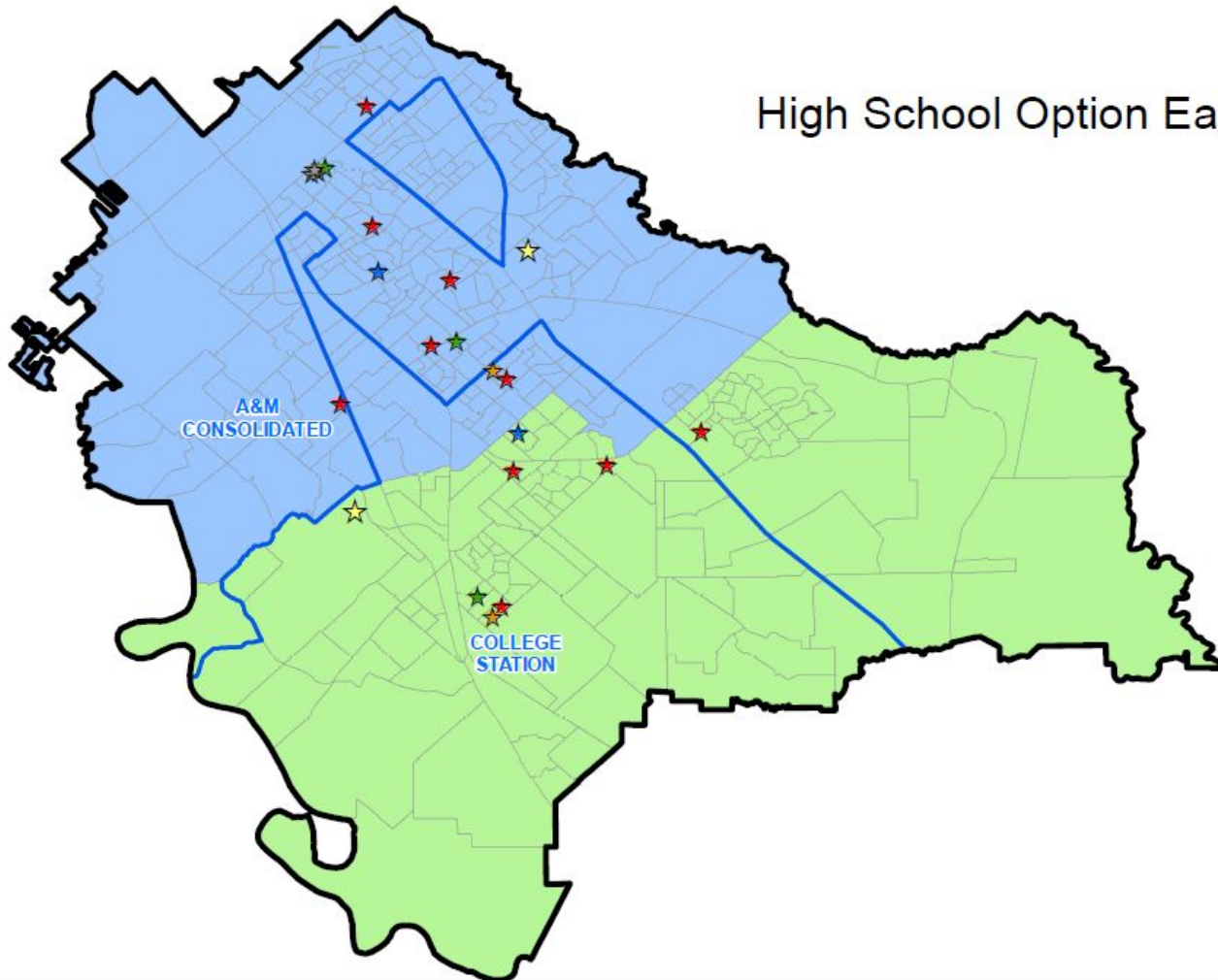
## COLLEGE STATION ISD

### High School Option Rock Prairie Ro

SCHOOL	CAPACITY	2019/20	2020/21	2021/22	2022/23	2023/24	2024/25	2025/26	2026/27	2027/28
A&M CONSOLIDATED	2,350	1,570	1,623	1,718	1,777	1,843	1,882	1,874	1,848	1,833
COLLEGE STATION	1,950	2,375	2,436	2,575	2,789	2,931	3,102	3,164	3,264	3,330



## High School Option East West Line



## COLLEGE STATION ISD

### High School Option East West Line

27.5%

SCHOOL	8	9	10	11	12	8TH-11TH	9TH-12TH	CAPACITY	UTILIZATION	ED	%ED
A&M CONSOLIDATED	635	580	530	512	535	2,257	2,157	2,350	91.8%	869	40.3%
COLLEGE STATION	328	414	385	388	380	1,515	1,567	1,950	80.4%	201	12.8%

## COLLEGE STATION ISD

### High School Option East West Line

SCHOOL	CAPACITY	2019/20	2020/21	2021/22	2022/23	2023/24	2024/25	2025/26	2026/27	2027/28
A&M CONSOLIDATED	2,350	2,218	2,264	2,382	2,485	2,578	2,650	2,657	2,650	2,656
COLLEGE STATION	1,950	1,727	1,795	1,911	2,081	2,196	2,334	2,381	2,462	2,507



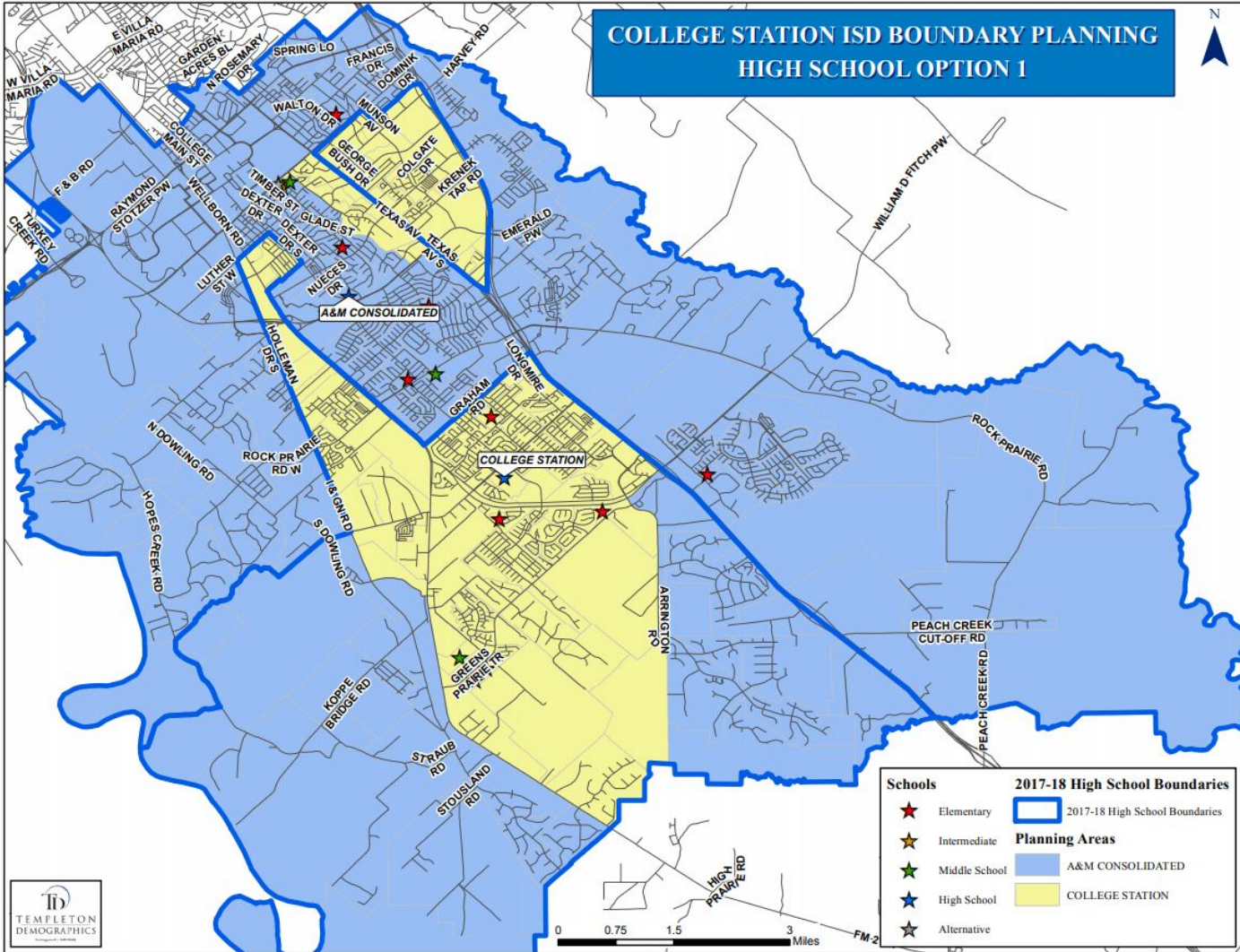
# ***CURRENT OPTIONS***

*From 4/4/18 Meeting*



***OPTION 1***

# COLLEGE STATION ISD BOUNDARY PLANNING HIGH SCHOOL OPTION 1



Schools	2017-18 High School Boundaries
★ Elementary	2017-18 High School Boundaries
★ Intermediate	<b>Planning Areas</b>
★ Middle School	A&M CONSOLIDATED
★ High School	COLLEGE STATION
★ Alternative	

# OPTION 1

## COLLEGE STATION ISD

### Option 1 High School Grade Report

SCHOOL	8	9	10	11	12	8TH-11TH	9TH-12TH	CAPACITY	UTILIZATION	ED	%ED
A&M CONSOLIDATED	549	492	480	475	498	1,996	1,945	2,350	82.8%	596	30.6%
COLLEGE STATION	414	502	435	425	417	1,776	1,779	1,950	91.2%	474	26.6%

4%

## COLLEGE STATION ISD

### Option 1 High School Forecast Report

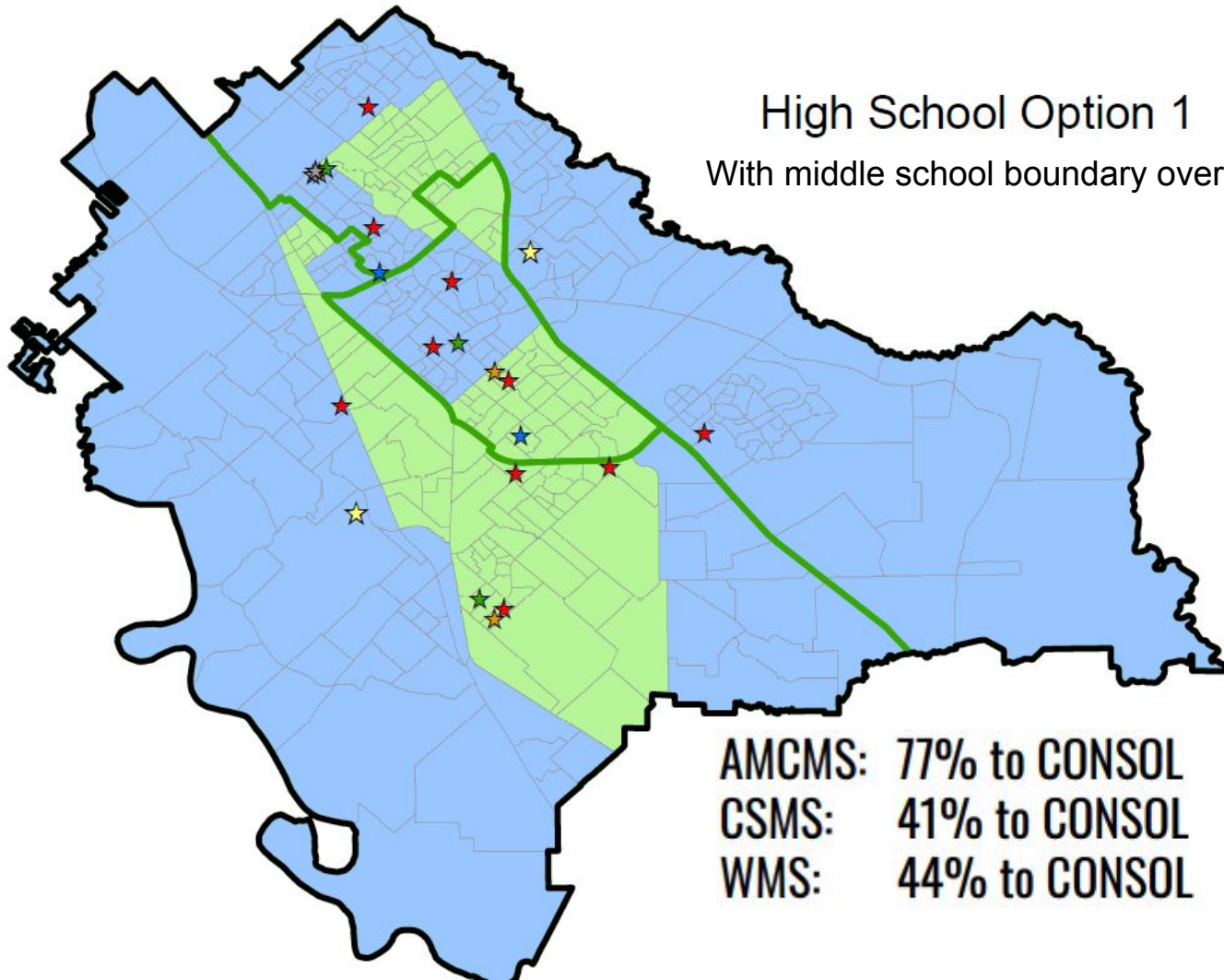
SCHOOL	CAPACITY	2019/20	2020/21	2021/22	2022/23	2023/24	2024/25	2025/26	2026/27	2027/28
A&M CONSOLIDATED	2,350	2,002	2,079	2,221	2,320	2,433	2,521	2,558	2,569	2,598
COLLEGE STATION	1,950	1,943	1,980	2,072	2,246	2,341	★2,463	2,480	2,543	2,565

Bond - CSHS

Bond - HS #3

# High School Option 1

With middle school boundary overlay



AMCMS:	77% to CONSOL	23% to CSHS
CSMS:	41% to CONSOL	59% to CSHS
WMS:	44% to CONSOL	56% to CSHS

# PROJECTED TRANSPORTATION IMPACT - OPTION 1

AREA	CURRENT HS ROUTES	ADDED ROUTES w THIS OPTION	ADDED ROUTES 2019 GROWTH*	NET ADDS	TOTAL COSTS (@\$20 K/ ROUTE)
ANDERSON ST	0	2 HS ONLY	0	2	\$40 K
INDIAN LAKES AREA	2 IS/MS/HS	1 HS ONLY	0	1	\$20 K
WEST SIDE	3 IS/MS/HS	3 HS ONLY	1	2	\$40 K

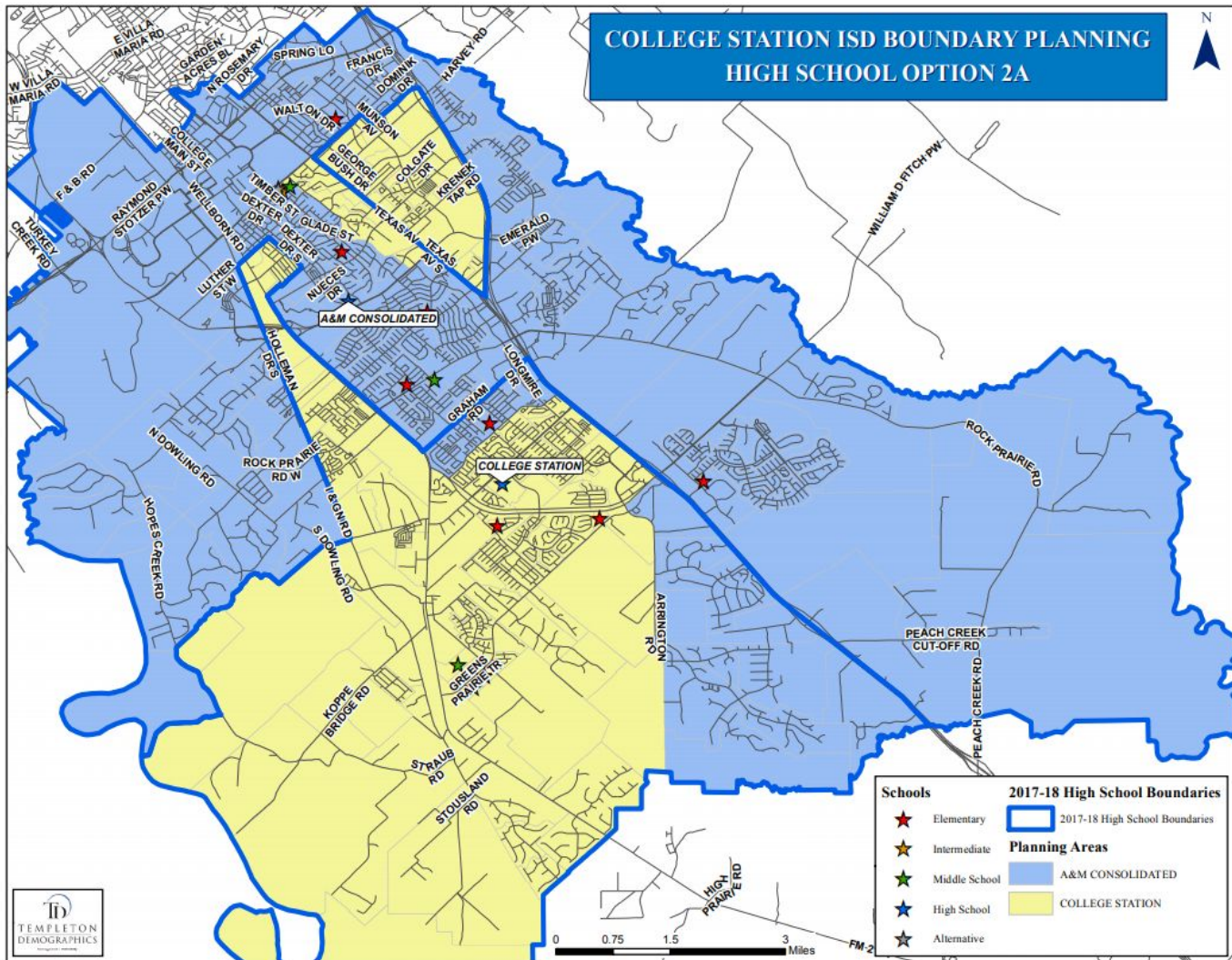
*\*Independent of zone changes*





***OPTION 2a***

# COLLEGE STATION ISD BOUNDARY PLANNING HIGH SCHOOL OPTION 2A



<b>Schools</b>		<b>2017-18 High School Boundaries</b>	
★	Elementary		2017-18 High School Boundaries
★	Intermediate	<b>Planning Areas</b>	
★	Middle School		A&M CONSOLIDATED
★	High School		COLLEGE STATION
★	Alternative		



# OPTION 2a

## COLLEGE STATION ISD

### Option 2a High School Grade Report

SCHOOL	8	9	10	11	12	8TH-11TH	9TH-12TH	CAPACITY	UTILIZATION	ED	%ED
A&M CONSOLIDATED	536	480	472	474	505	1,962	1,931	2,350	82.2%	592	30.7%
COLLEGE STATION	427	514	443	426	410	1,810	1,793	1,950	91.9%	478	26.7%

4%

## COLLEGE STATION ISD

### Option 2a High School Forecast Report

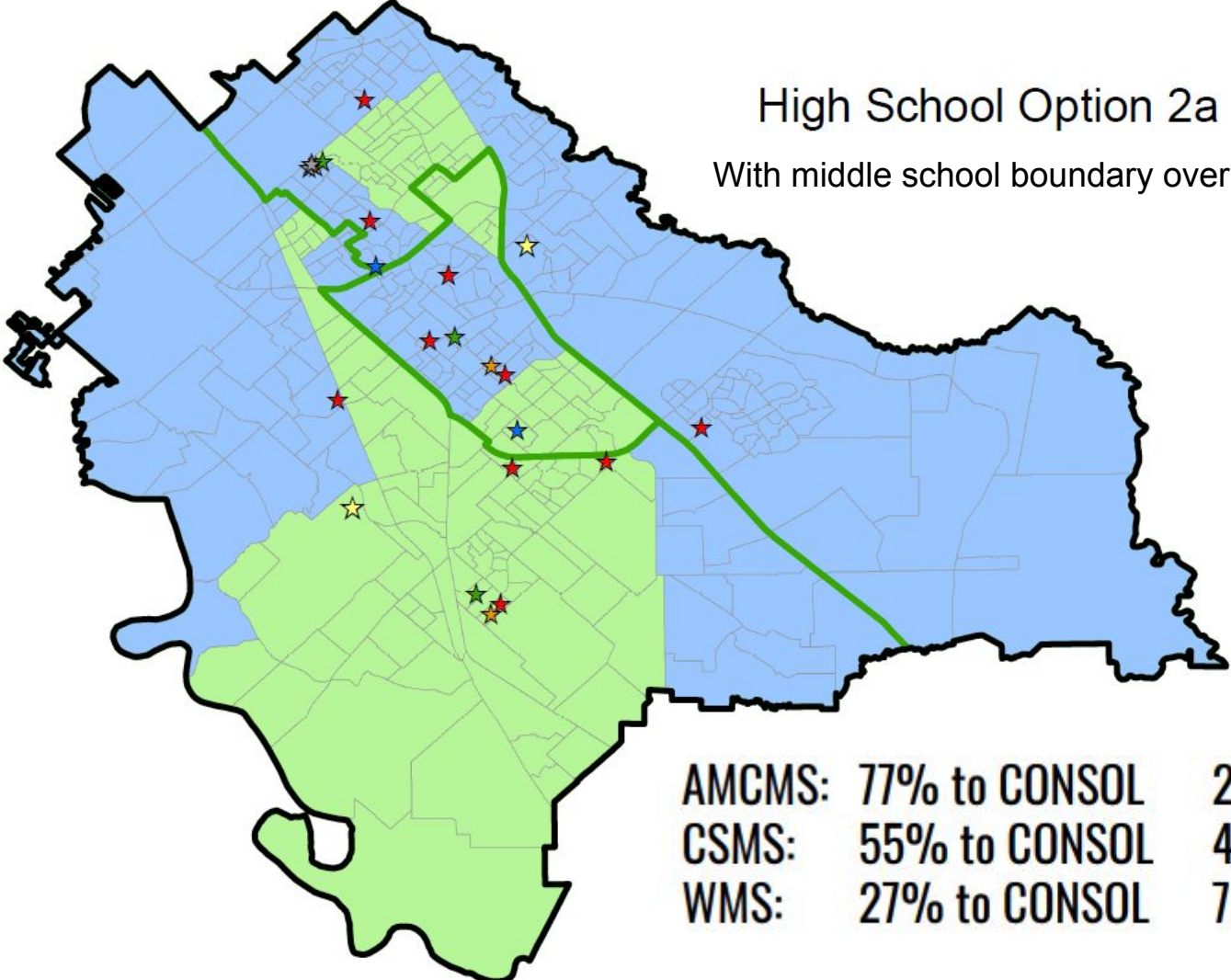
Bond - CSHS

Bond - HS #3

SCHOOL	CAPACITY	2019/20	2020/21	2021/22	2022/23	2023/24	2024/25	2025/26	2026/27	2027/28
A&M CONSOLIDATED	2,350	2,001	2,077	2,219	2,315	2,429	2,514	2,551	2,559	2,586
COLLEGE STATION	1,950	1,944	1,982	2,074	2,251	2,345	★2,470	2,487	2,553	2,577

# High School Option 2a

With middle school boundary overlay



AMCMS:	77% to CONSOL	23% to CSHS
CSMS:	55% to CONSOL	45% to CSHS
WMS:	27% to CONSOL	73% to CSHS

# PROJECTED TRANSPORTATION IMPACT - OPTION 2a

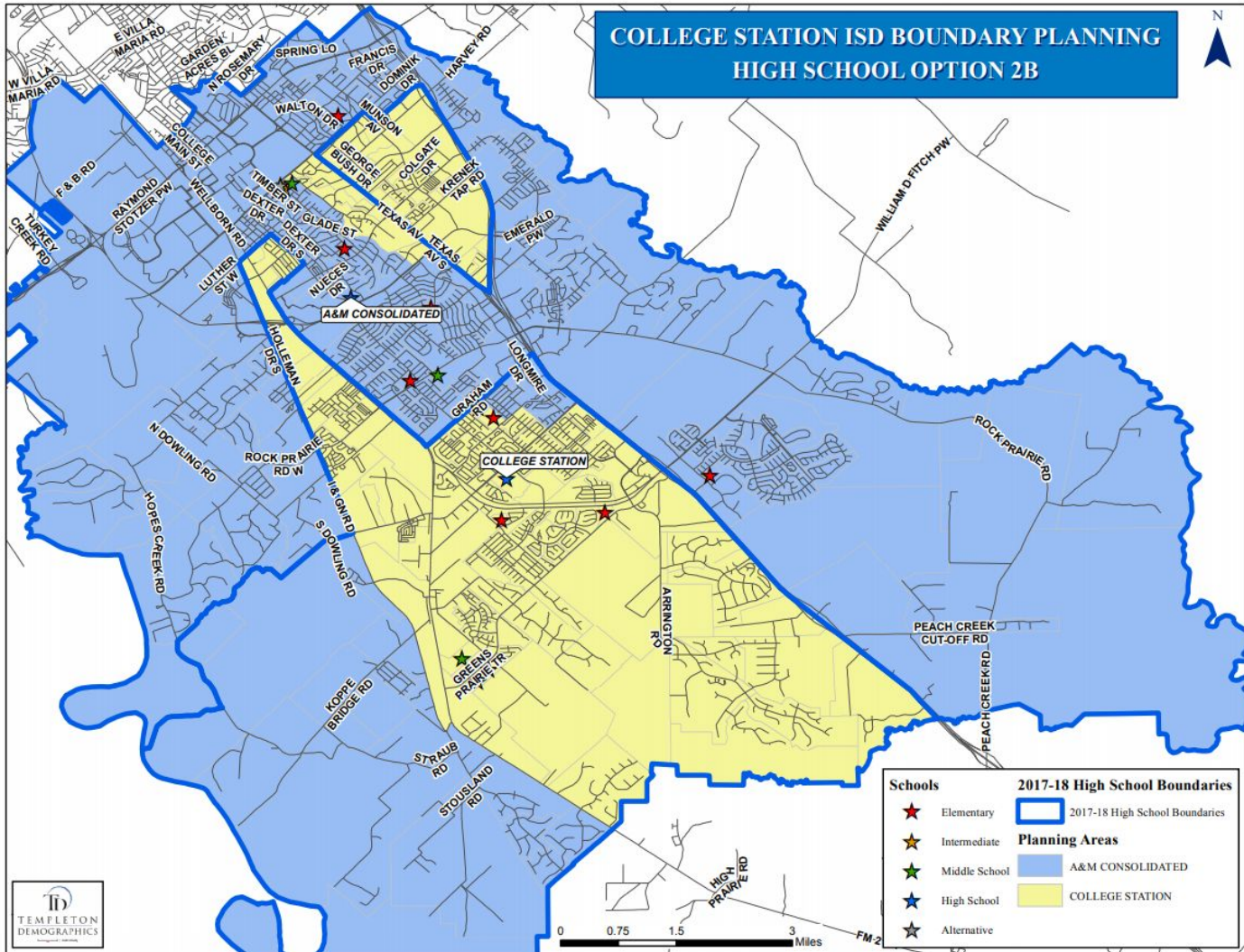
AREA	CURRENT ROUTES	ADDED ROUTES w THIS OPTION	ADDED ROUTES 2019 GROWTH*	NET ADDS	TOTAL COSTS (@\$20 K/ ROUTE)
ANDERSON ST	0	2 HS ONLY	0	2	\$40 K
INDIAN LAKES AREA	2 IS/MS/HS	1 HS ONLY	0	1	\$20 K
MID TOWN	0	1 HS ONLY	0	1	\$20 K

*\*Independent of zone changes*



***OPTION 2b***

# COLLEGE STATION ISD BOUNDARY PLANNING HIGH SCHOOL OPTION 2B



Schools		2017-18 High School Boundaries	
	Elementary		2017-18 High School Boundaries
	Intermediate		<b>Planning Areas</b>
	Middle School		A&M CONSOLIDATED
	High School		COLLEGE STATION
	Alternative		



# OPTION 2b

## COLLEGE STATION ISD

### Option 2b High School Grade Report

SCHOOL	8	9	10	11	12	8TH-11TH	9TH-12TH	CAPACITY	UTILIZATION	ED	%ED
A&M CONSOLIDATED	540	486	484	466	494	1,976	1,930	2,350	82.1%	604	31.3%
COLLEGE STATION	423	508	431	434	421	1,796	1,794	1,950	92.0%	466	26.0%

5.3%

## COLLEGE STATION ISD

### Option 2b High School Forecast Report

Bond - CSHS

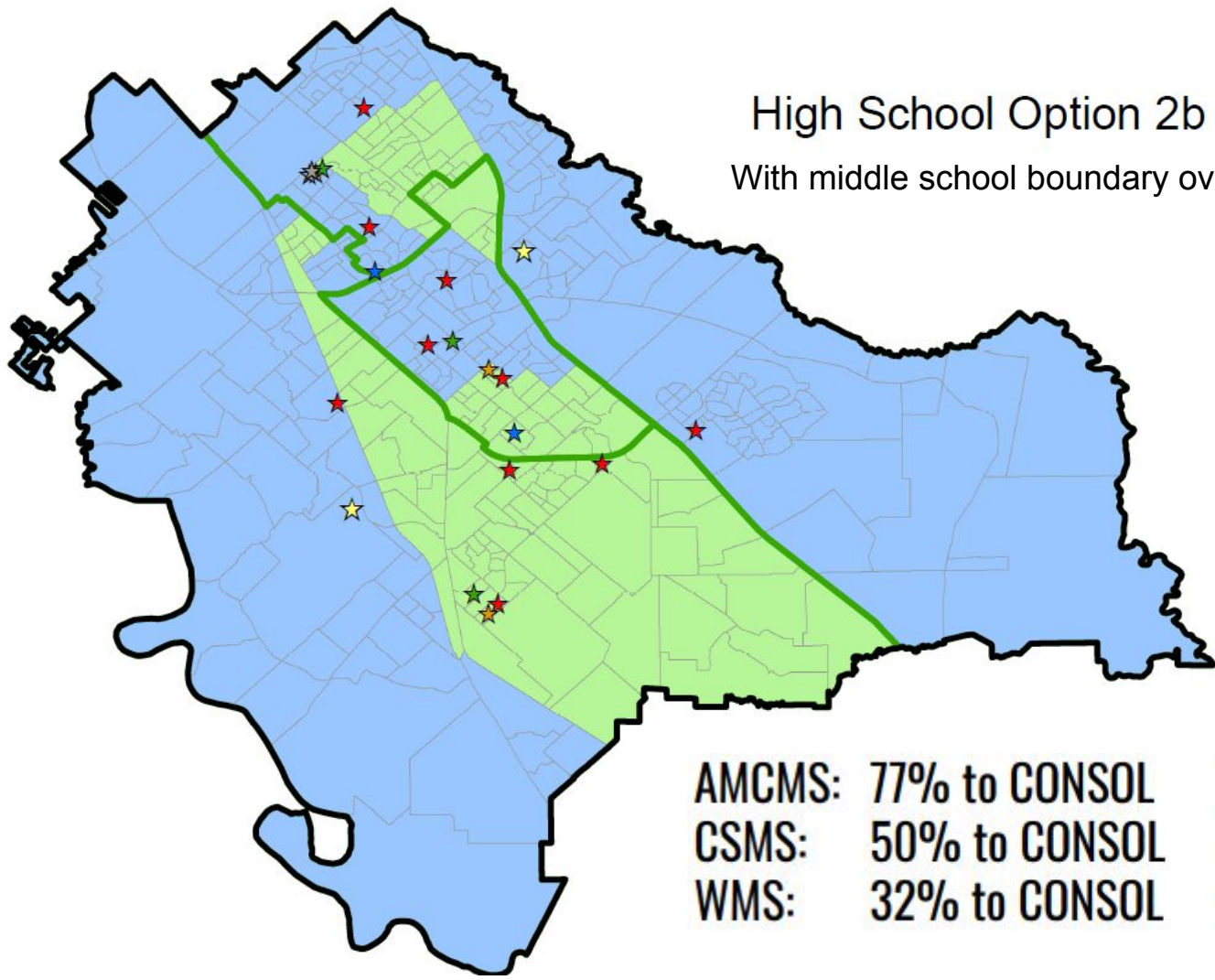
Bond - HS #3

SCHOOL	CAPACITY	2019/20	2020/21	2021/22	2022/23	2023/24	2024/25	2025/26	2026/27	2027/28
A&M CONSOLIDATED	2,350	1,990	2,062	2,195	2,290	2,400	2,484	2,519	2,525	2,552
COLLEGE STATION	1,950	1,955	1,997	2,098	2,276	2,374	★2,500	2,519	2,587	2,611



# High School Option 2b

With middle school boundary overlay



AMCMS:	77% to CONSOL	23% to CSHS
CSMS:	50% to CONSOL	50% to CSHS
WMS:	32% to CONSOL	68% to CSHS

# PROJECTED TRANSPORTATION IMPACT - OPTION 2b

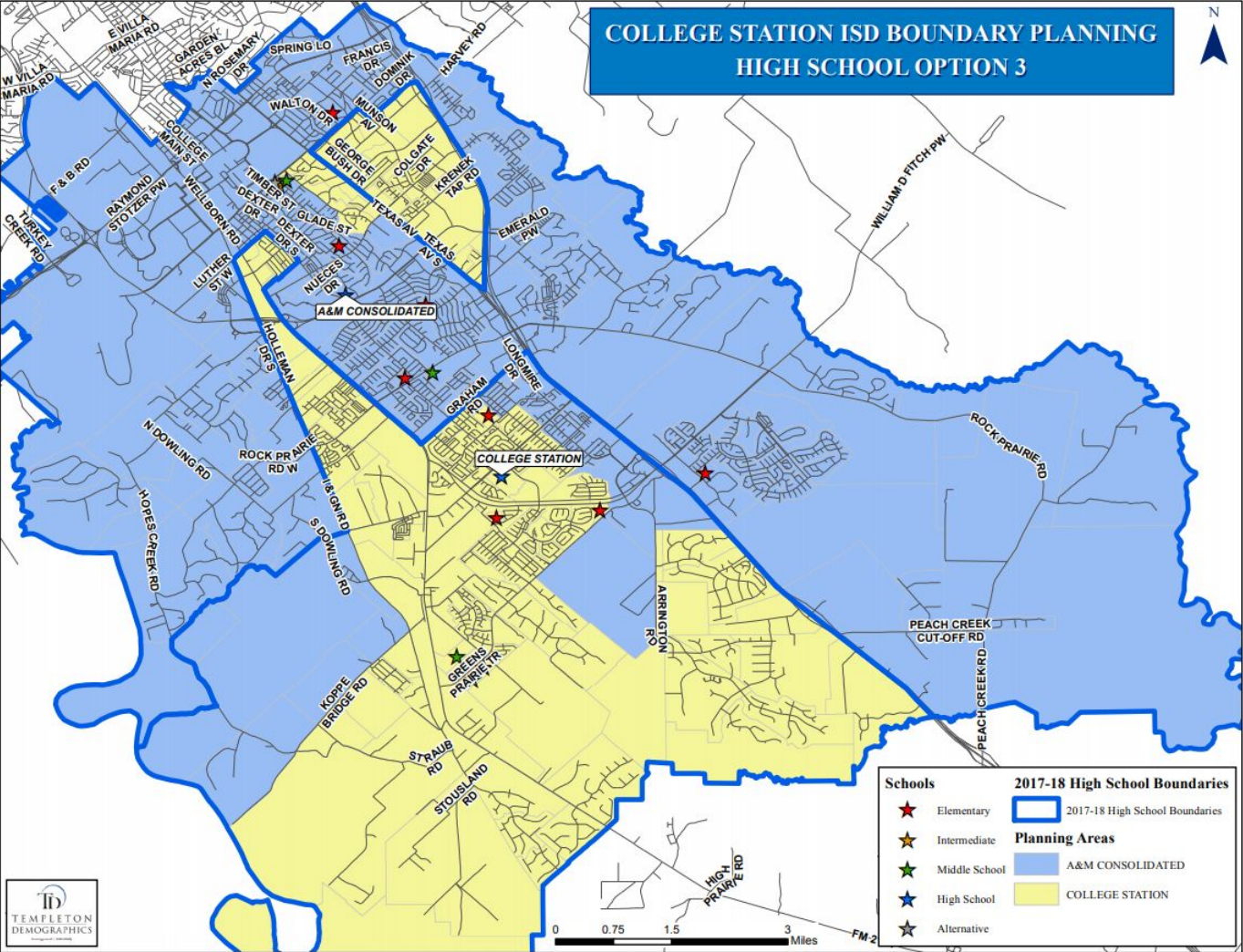
AREA	CURRENT ROUTES	ADDED ROUTES w THIS OPTION	ADDED ROUTES 2019 GROWTH*	NET ADDS	TOTAL COSTS (@\$20 K/ ROUTE)
ANDERSON ST	0	2 HS ONLY	0	2	\$40 K
MID TOWN	0	1 HS ONLY	0	1	\$20 K
WEST SIDE	3 IS/MS/HS	3 HS ONLY	1	2	\$40 K

*\*Independent of zone changes*



# ***OPTION 3***

# COLLEGE STATION ISD BOUNDARY PLANNING HIGH SCHOOL OPTION 3



Schools		2017-18 High School Boundaries	
	Elementary		2017-18 High School Boundaries
	Intermediate		<b>Planning Areas</b>
	Middle School		A&M CONSOLIDATED
	High School		COLLEGE STATION
	Alternative		



# OPTION 3

## COLLEGE STATION ISD

### Option 3 High School Grade Report

SCHOOL	8	9	10	11	12	8TH-11TH	9TH-12TH	CAPACITY	UTILIZATION	ED	%ED
A&M CONSOLIDATED	547	492	481	475	493	1,995	1,941	2,350	82.6%	618	31.8%
COLLEGE STATION	416	502	434	425	422	1,777	1,783	1,950	91.4%	452	25.4%

6.4%

## COLLEGE STATION ISD

### Option 3 High School Forecast Report

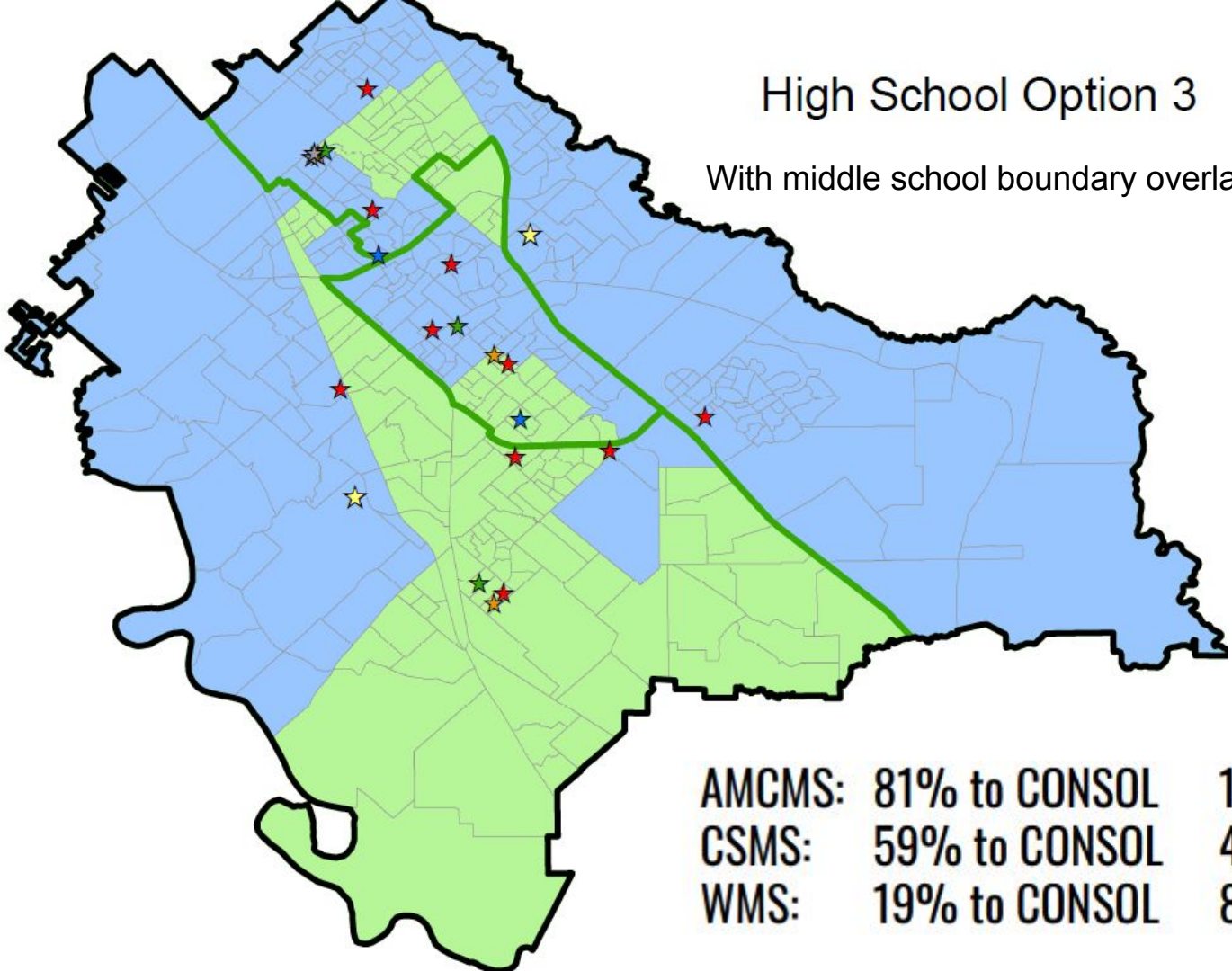
Bond - CSHS

Bond - HS #3

SCHOOL	CAPACITY	2019/20	2020/21	2021/22	2022/23	2023/24	2024/25	2025/26	2026/27	2027/28
A&M CONSOLIDATED	2,350	2,007	2,089	2,233	2,343	2,475	2,579	2,635	2,652	2,678
COLLEGE STATION	1,950	1,938	1,970	2,060	2,223	2,299	★2,405	2,403	2,460	2,485

# High School Option 3

With middle school boundary overlay



<b>AMCMS:</b>	<b>81% to CONSOL</b>	<b>19% to CSHS</b>
<b>CSMS:</b>	<b>59% to CONSOL</b>	<b>41% to CSHS</b>
<b>WMS:</b>	<b>19% to CONSOL</b>	<b>81% to CSHS</b>

# PROJECTED TRANSPORTATION IMPACT - OPTION 3

AREA	CURRENT ROUTES	ADDED ROUTES w THIS OPTION	ADDED ROUTES 2019 GROWTH*	NET ADDS	TOTAL COSTS (@\$20 K/ ROUTE)
ANDERSON ST	0	1	0	1	\$20 K
MID TOWN	0 IS/MS/HS	2 HS	0	2	\$40 K
WEST SIDE	1 IS/MS/HS	1 HS	0	1	\$20 K

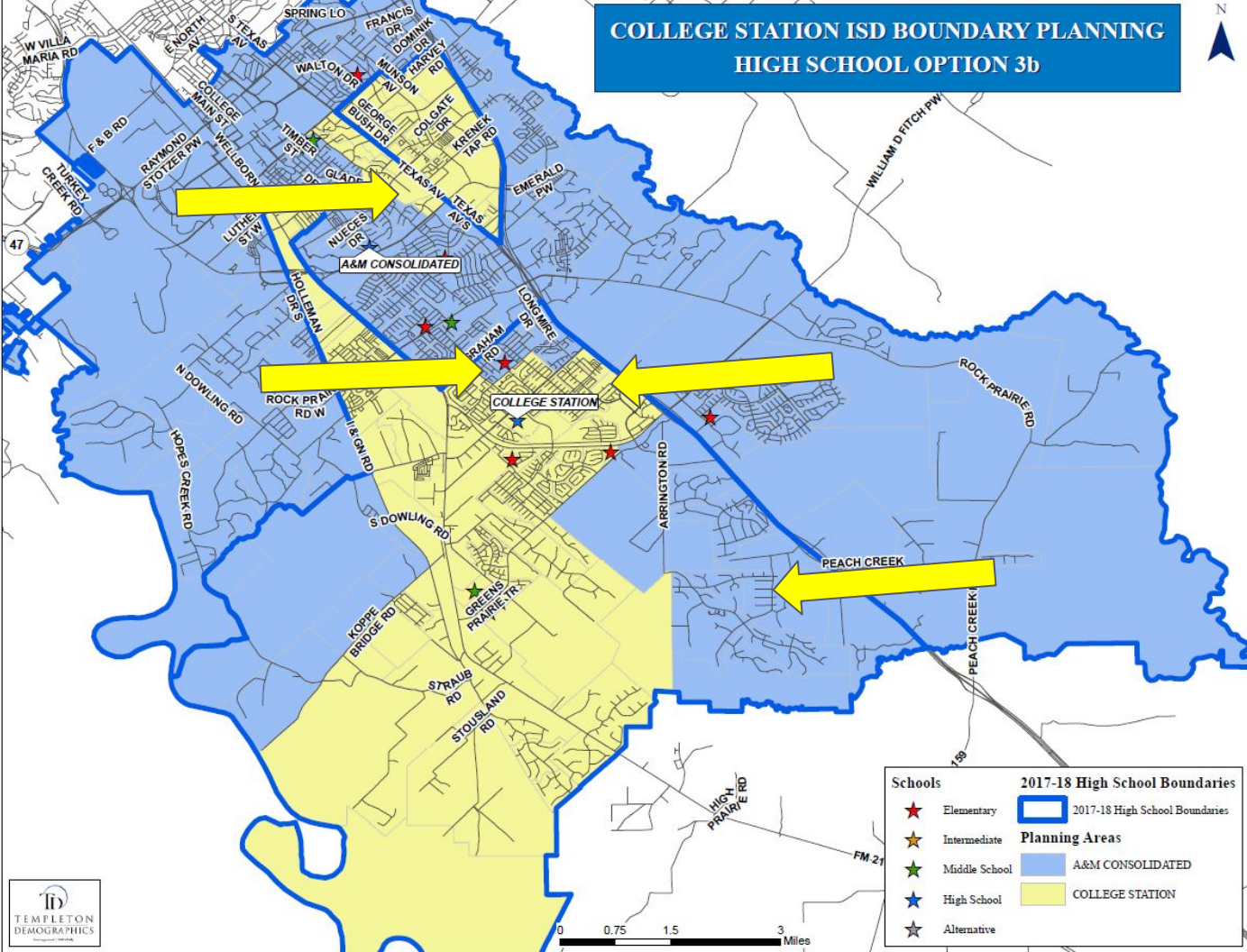
*\*Independent of zone changes*



***OPTION 3b***



# COLLEGE STATION ISD BOUNDARY PLANNING HIGH SCHOOL OPTION 3b



Schools		2017-18 High School Boundaries	
★	Elementary		2017-18 High School Boundaries
★	Intermediate		A&M CONSOLIDATED
★	Middle School		COLLEGE STATION
★	High School		
★	Alternative		

# OPTION 3b

## COLLEGE STATION ISD

### Plan 3b High School Grade Report

SCHOOL	8	9	10	11	12	8TH-11TH	9TH-12TH	CAPACITY	UTILIZATION	ED	%ED
A&M CONSOLIDATED	542	484	487	469	501	1,982	1,941	2,350	82.6%	589	30.3%
COLLEGE STATION	421	510	428	431	414	1,790	1,783	1,950	91.4%	481	27.0%

3.3%

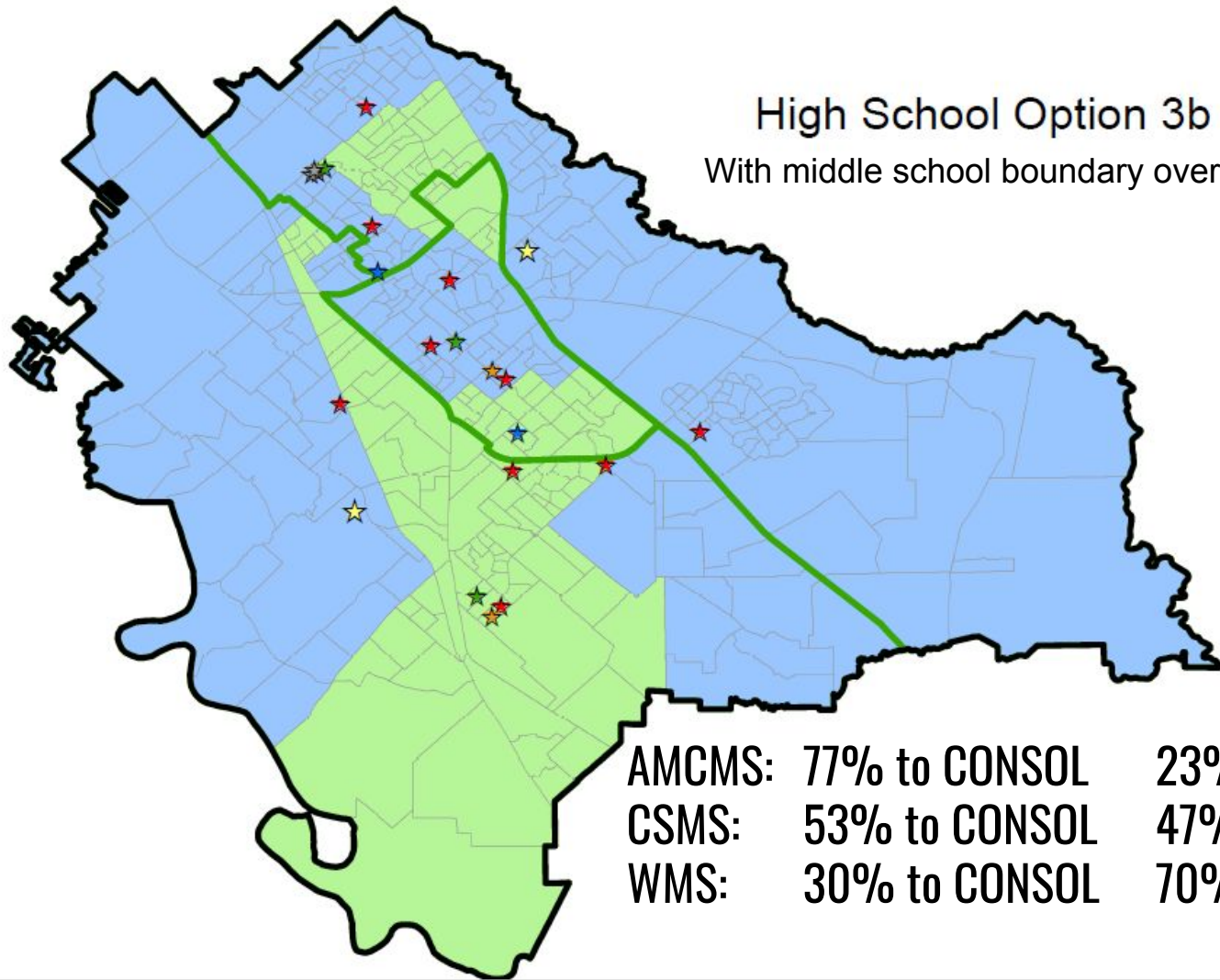
## COLLEGE STATION ISD

### Plan 3b High School Forecast

SCHOOL	CAPACITY	Bond - CSHS					Bond - HS #3				
		2019/20	2020/21	2021/22	2022/23	2023/24	2024/25	2025/26	2026/27	2027/28	
A&M CONSOLIDATED	2,350	2,011	2,095	2,246	2,361	2,497	2,606	2,664	2,685	2,713	
COLLEGE STATION	1,950	1,934	1,964	2,047	2,205	2,277	2,378	2,374	2,427	2,450	

# High School Option 3b

With middle school boundary overlay



AMCMS:	77% to CONSOL	23% to CSHS
CSMS:	53% to CONSOL	47% to CSHS
WMS:	30% to CONSOL	70% to CSHS

# PROJECTED TRANSPORTATION IMPACT - OPTION 3b

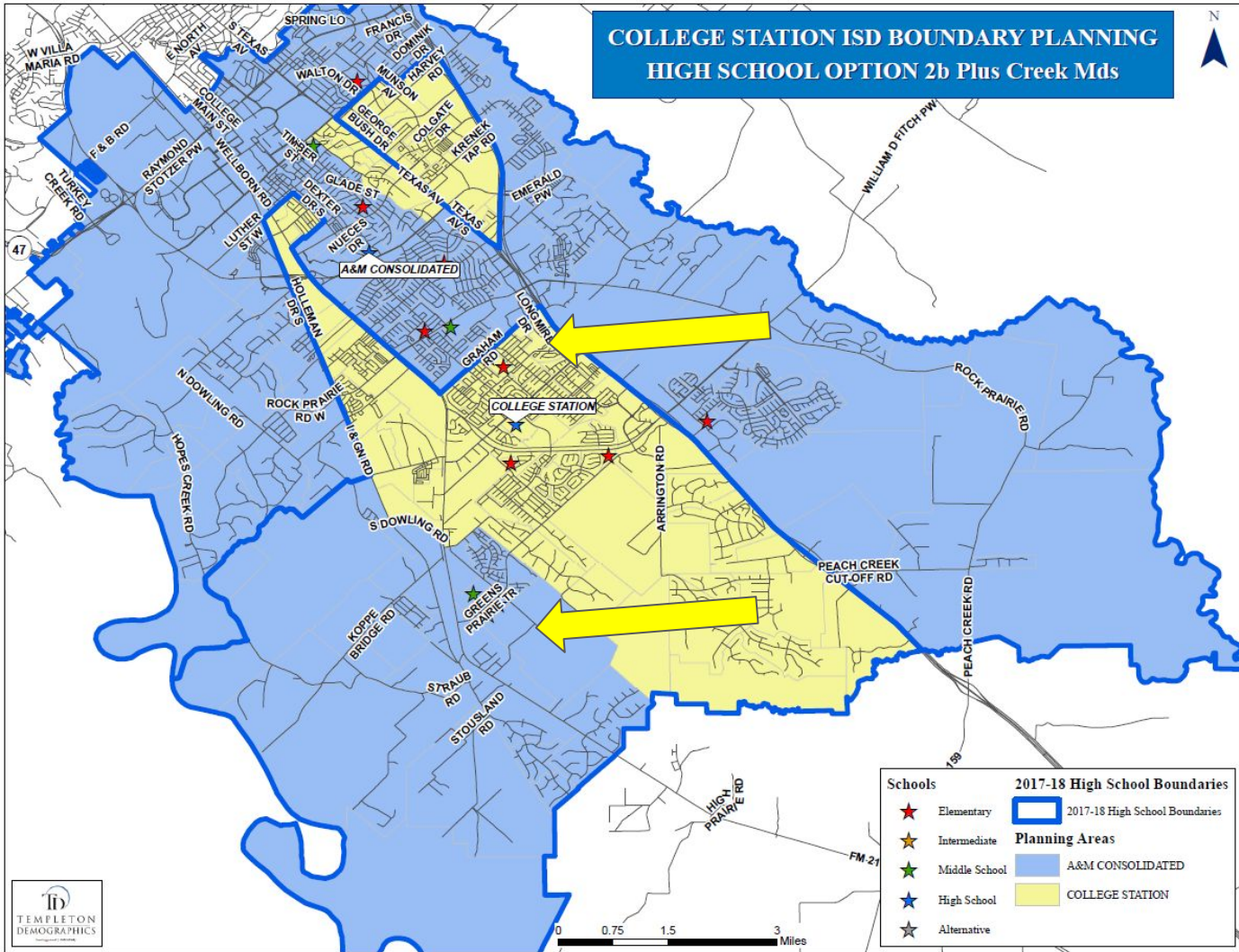
AREA	CURRENT ROUTES	ADDED ROUTES w THIS OPTION	ADDED ROUTES 2019 GROWTH*	NET ADDS	TOTAL COSTS (@\$20 K/ ROUTE)
ANDERSON ST	0	2	0	2	\$40 K
MID TOWN	0	1 HS ONLY	0	1	\$20 K
WEST SIDE	1 IS/MS/HS	1 HS	0	1	\$20 K
INDIAN LAKES AREA	2 IS/MS/HS	1 HS ONLY	0	1	\$20 K

*\*Independent of zone changes*



***OPTION 2b + CREEK MEADOWS / EAST WELLBORN RD.***

# COLLEGE STATION ISD BOUNDARY PLANNING HIGH SCHOOL OPTION 2b Plus Creek Mds



Schools		2017-18 High School Boundaries	
★	Elementary		2017-18 High School Boundaries
★	Intermediate		<b>Planning Areas</b>
★	Middle School		A&M CONSOLIDATED
★	High School		COLLEGE STATION
★	Alternative		

# OPTION 2b + CREEK MEADOWS / EAST WELLBORN RD.

## COLLEGE STATION ISD

### Plan 2b + Ck. Mds. & E. Wellborn High School Grade Report

5.1%

SCHOOL	8	9	10	11	12	8TH-11TH	9TH-12TH	CAPACITY	UTILIZATION	ED	%ED
A&M CONSOLIDATED	550	493	472	485	505	2,000	1,955	2,350	83.2%	609	31.2%
COLLEGE STATION	413	501	443	415	410	1,772	1,769	1,950	90.7%	461	26.1%

## COLLEGE STATION ISD

Bond - CSHS

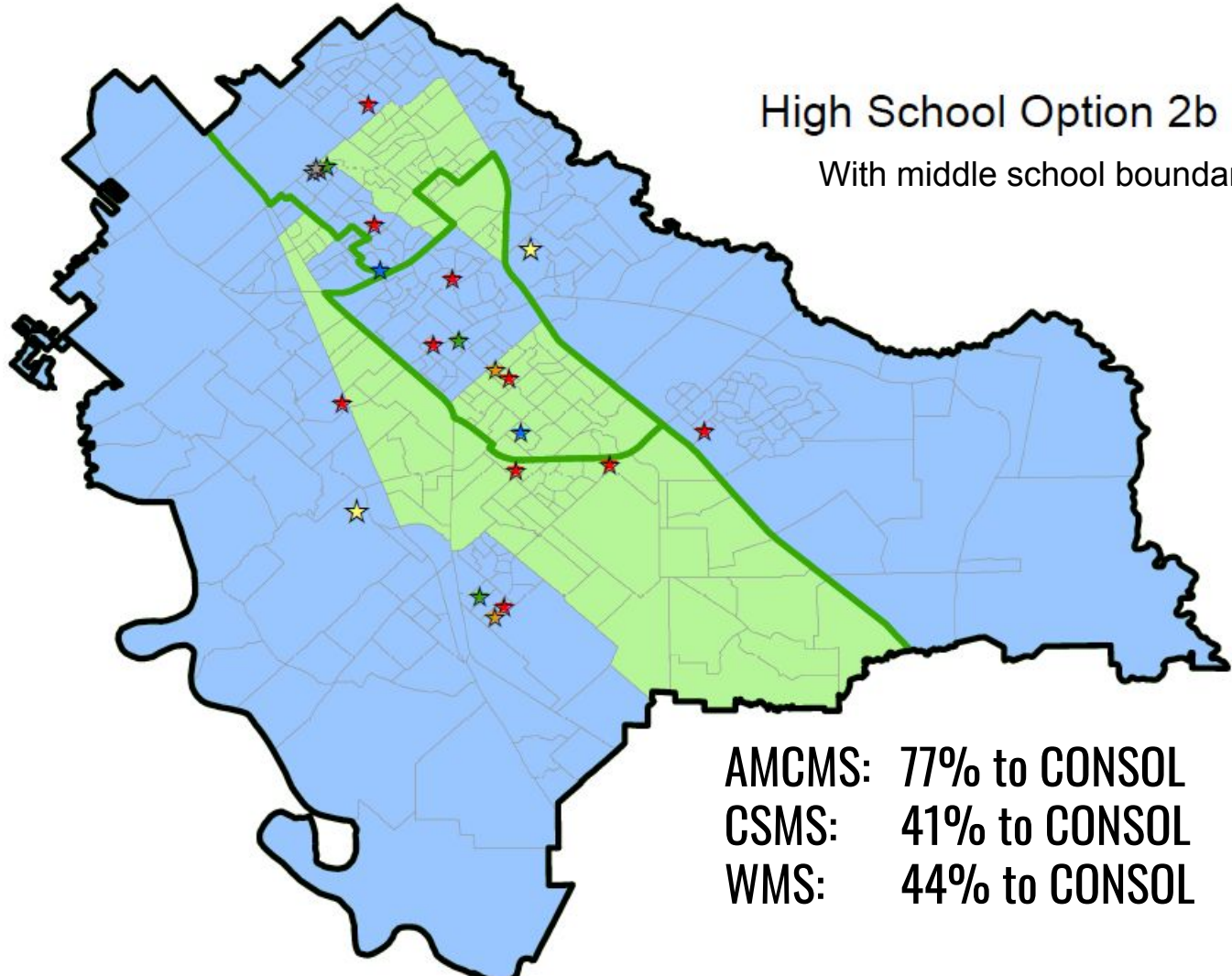
Bond - HS #3

### Plan 2b + Ck. Mds. & E. Wellborn High School Forecast Report

SCHOOL	CAPACITY	2019/20	2020/21	2021/22	2022/23	2023/24	2024/25	2025/26	2026/27	2027/28
A&M CONSOLIDATED	2,350	2,017	2,099	2,240	2,343	2,458	2,548	2,584	2,594	2,623
COLLEGE STATION	1,950	1,928	1,960	2,053	2,223	2,316	★2,436	2,454	2,518	2,540

# High School Option 2b + Ck. Mds.

With middle school boundary overlay



AMCMS:	77% to CONSOL	23% to CSHS
CSMS:	41% to CONSOL	59% to CSHS
WMS:	44% to CONSOL	56% to CSHS



# PROJECTED TRANSPORTATION IMPACT - OPTION 2b + *CREEK MEADOWS / EAST WELLBORN RD.*

AREA	CURRENT ROUTES	ADDED ROUTES w THIS OPTION	ADDED ROUTES 2019 GROWTH*	NET ADDS	TOTAL COSTS (@\$20 K/ ROUTE)
ANDERSON ST	0	2 HS ONLY	0	2	\$40 K
CREEK MEADOWS AREA / EAST WELLBORN RD.	2 IS/MS/HS	1 HS ONLY	0	1	\$ 20 K
WEST SIDE	3 IS/MS/HS	3 HS ONLY	1	2	\$40 K

*\*Independent of zone changes*