

2007 & 2009 BOND UPDATE

April 14, 2010

2007 Bond Expenditures

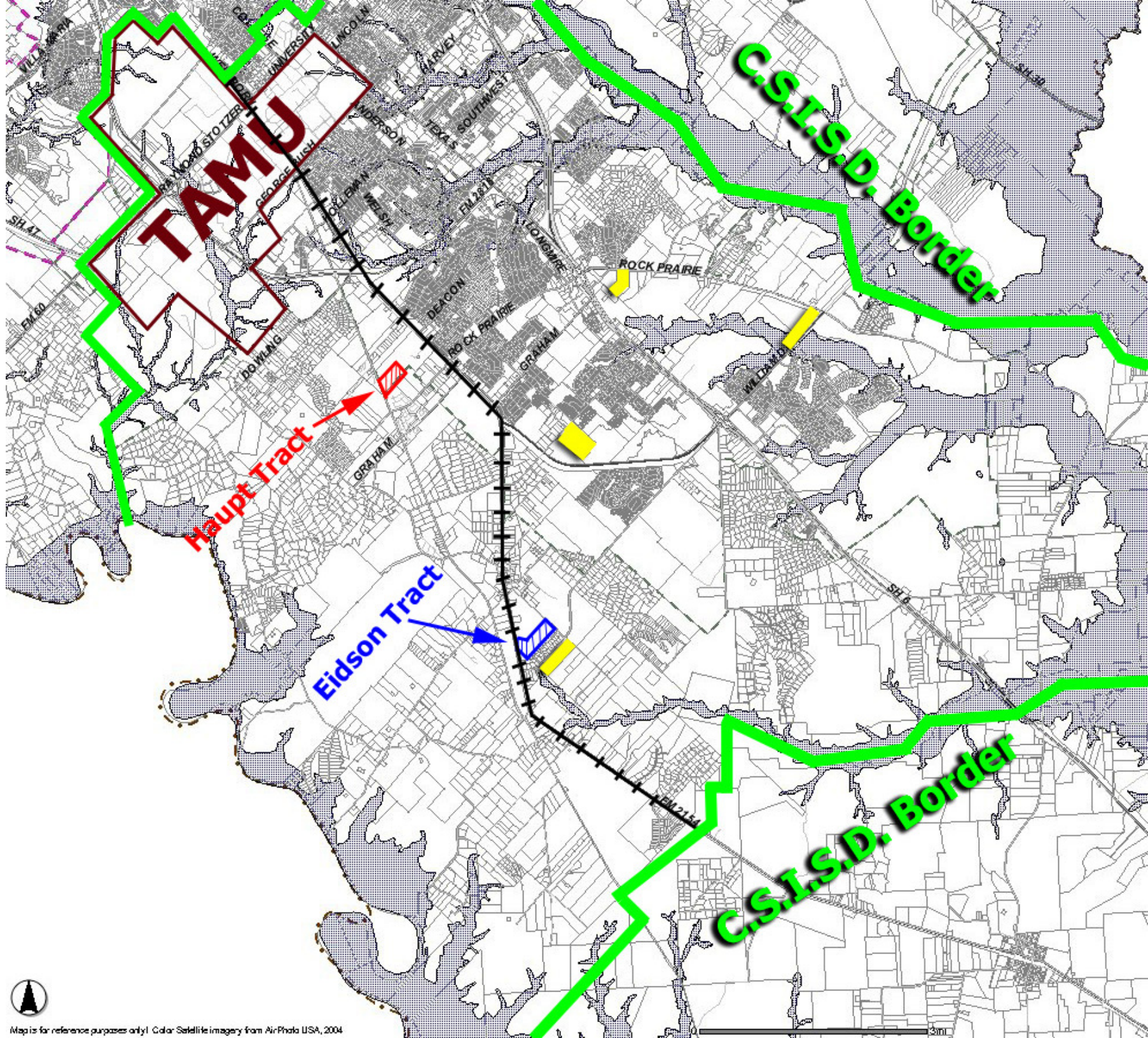
- Closed out the following projects since last month:
 - Creek View
 - College Hills
 - Career and Technology Education
 - CSMS Fine Arts
 - Cypress Grove Classrooms and Roof
 - AMCHS and Oakwood Roofs

2007 Additional Projects

- AMCMS Track is Complete
- Security vestibules timelines
 - Construction Documents
 - Bidding in April
 - GMP to Board April 20th
 - Summer 2010 Construction
- Classroom additions
 - Construction Documents – after the security vestibules have been designed
 - GMP to Board in October 2010
 - Construction Nov/Dec 2010 to July 2011

2007 Additional Projects

- Wireless Overlay of the District
 - ▣ Estimated completion by end of July 2010
- Land Purchases
 - ▣ Eidson
 - 53.31 Acres between Wellborn Road and Royder Road
 - Closed yesterday
 - ▣ Haupt
 - 27.021 Acres on Jones Butler just north of Rock Prairie
 - Need to close by end of April without extension (August with extension)



2009 Bond Expenditures

- All 28 buses have been delivered and are in service
 - ▣ 25 regular and SPED buses
 - ▣ 3 transit buses
- Over \$31 million still remains from our first bond sale in 2009
 - ▣ Primarily paid out architect fees
- Tracking for our second bond sale in August/September 2010
 - ▣ ~\$75 Million

Support Services Facility

- ❑ Slowed initially because of the constant rain this winter
- ❑ The drier weather the last few weeks has improved our progress
- ❑ Still on time to finish by the end of July
- ❑ Construction of the metal building is critical path

Support Services Facility



- This is a view of the building footprint after concrete drill piers have been completed.
- Grade beam work has already commenced.

Support Services Facility

- These are the culverts that will handle all of the water entering the site from the Rock Prairie Road area.
- They are under the primary access drive to the front of the building and parking area.



Support Services Facility



- Underground rough in plumbing and electrical work for main building is complete.
- Preparations for concrete grade beam foundation pour are nearly complete with the first major concrete pour scheduled for yesterday
- This is a view of the formwork for the grade beams being installed.

Support Services Facility

- This is a view of the old stock tank being backfilled with the dirt being removed per the photo above.
- We are making very efficient use of the dirt on site by “balancing” what we have compared to what we need, which minimizes transportation costs.



Greens Prairie Elementary

□ Timeline

- Construction Documents hit the street at the end of March
- Bidding the school in April
- Guaranteed Maximum Price (GMP) at the May Board meeting

□ Images

GREENS PRAIRIE ELEMENTARY SCHOOL
COLLEGE STATION I.S.D.



GREENS PRAIRIE ELEMENTARY SCHOOL
COLLEGE STATION I.S.D.



GREENS PRAIRIE ELEMENTARY SCHOOL
COLLEGE STATION I.S.D.



Greens Prairie Elementary – cont.

- City of College Station Coordination
 - City is willing to provide space in the lift station across from the school to meet district needs now and in the future
 - in exchange for 2 acres on the Eidson site for a future fire station
 - City is now seeking to annex Greens Prairie Trail the length of our site
 - Right of way for road
 - Drastic difference between county and city requirements for Greens Prairie Trail

Greens Prairie Elementary – cont.

- Annexation of site is moving forward
 - City Council approved the petition (moved the process forward)
 - Planning and Zoning reviewed the petition and failed to make a recommendation
 - Two public hearings have been set for comment
 - Monday 5/17/10 7:00 p.m.
 - Tuesday 5/18/10 6:00 p.m.
 - Final Vote for Annexation – Thursday 6/10/10

College Station High School

- City of College Station Coordination
 - ▣ Interlocal Agreement (ILA) with the city of College Station to share the costs for the following
 - ▣ CSISD dedicated the right of way for
 - A 551 square foot corner clip at the intersection of Barron Road and Victoria Avenue
 - The land needed for the extension of Victoria Avenue from its current terminus to State Highway 40
 - ▣ In consideration for the land above, the city of College Station will construct and install a traffic signal at the corner of Barron Road and Victoria Avenue.

College Station High School

- Three tiered Guaranteed Maximum Price (GMP)
 - ▣ Site Package A (Clearing and Grubbing)
 - January
 - ▣ Site Package B (Site and Field Work)
 - March
 - ▣ Package C (Balance of the project)
 - Board will consider GMP at the April 20th Board meeting
 - \$82,510,945
 - The entire project is \$45,000 under the planning amount

CSHS Work Commencing

- Trees began coming down yesterday
 - ▣ Starting in the back working to the front
- Saving trees for potential use in auditorium
 - ▣ 4' x 4' sound reflecting surfaces
 - ▣ Running a mini mill on football field – cutting, drying and sending to Austin
- 73 Trees identified to be preserved on the site
- Planting over 200 additional trees

CSHS Site





Questions/Comments?