

2007 BOND UPDATE

February 16, 2010

AMCMS Track



- Project is still under budget and on schedule to be completed by February 14th.
- This is a view of the back straight-away and long jump/triple jump pits with new athletic surfacing installed.

AMCMS Track – cont.

- This is the high jump area, ready for painted logo to be installed
- Striping and other painting is the only significant work remaining, and it is scheduled for this weekend.
- Scheduled to be ready for students to use on Monday morning.



AMCMS Track – cont.



- This is a view of the crew regrading, re-sodding, and reinstalling the fence where the access drive was located.

Updated Timelines for Additional Projects

- The design team is working on the design for each renovation, working within the budget parameters.
- We have updated the timelines for each project.
 - ▣ Security vestibules – summer projects
 - GMP May 2010
 - Construction Summer 2010
 - ▣ Classroom additions – six month projects
 - GMP October 2010
 - Construction Nov/Dec 2010 to July 2011
 - ▣ Images



MAIN ENTRY / SECURITY VESTIBULE ELEVATION



Rock Prairie Elementary School
COLLEGE STATION I.S.D. COLLEGE STATION, TX



V L K | A R C H I T E C T S



EXTERIOR GARDEN ELEVATION



Rock Prairie Elementary School
COLLEGE STATION I.S.D. COLLEGE STATION, TX



V L K | A R C H I T E C T S



MAIN ENTRY / SECURITY VESTIBULE ELEVATION



Rock Prairie Elementary School
COLLEGE STATION I.S.D. COLLEGE STATION, TX



V L K | A R C H I T E C T S



SECURITY VESTIBULE / ENTRY ELEVATION



Oakwood Intermediate School
COLLEGE STATION I.S.D. COLLEGE STATION, TX



V L K | A R C H I T E C T S



OFFICE ELEVATION



Oakwood Intermediate School
COLLEGE STATION I.S.D. COLLEGE STATION, TX



V L K | A R C H I T E C T S



OFFICE / CORRIDOR ELEVATION



Oakwood Intermediate School
COLLEGE STATION I.S.D. COLLEGE STATION, TX



V L K | A R C H I T E C T S



CORRIDOR / CLASSROOM ELEVATION



Oakwood Intermediate School
COLLEGE STATION I.S.D. COLLEGE STATION, TX



V L K | A R C H I T E C T S



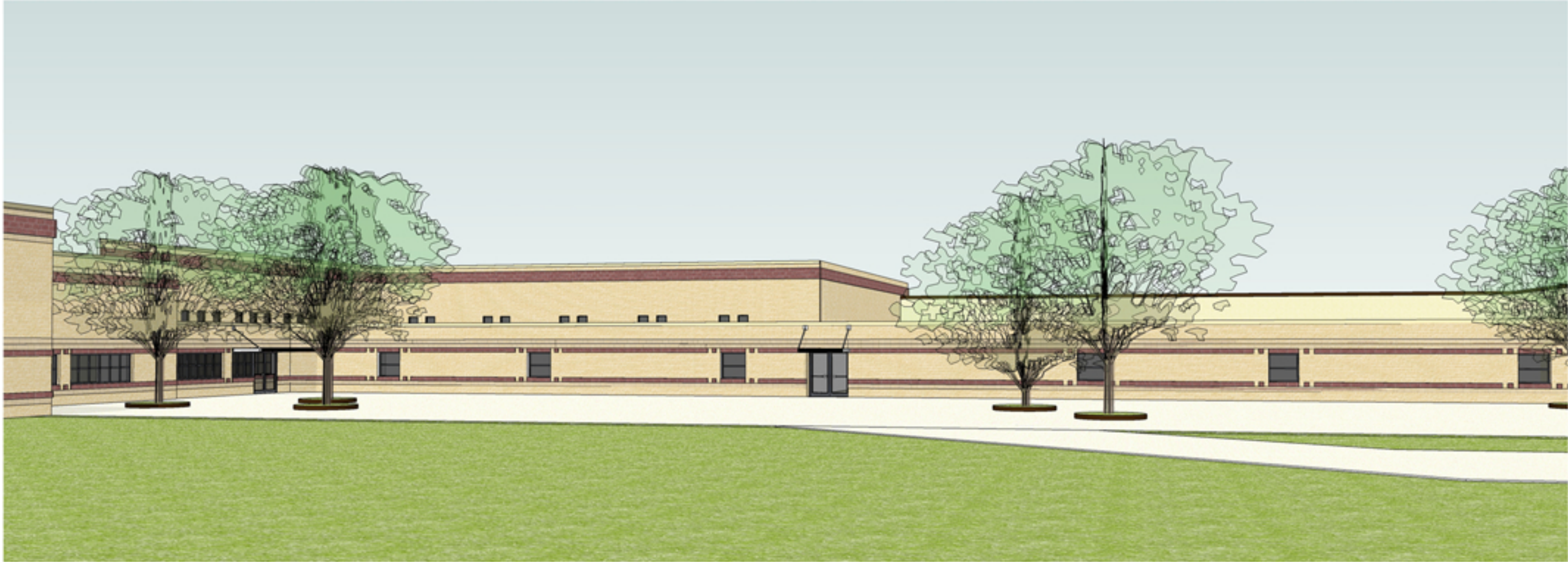
CORRIDOR / CLASSROOM ELEVATION



Oakwood Intermediate School
COLLEGE STATION I.S.D. COLLEGE STATION, TX



V L K | A R C H I T E C T S



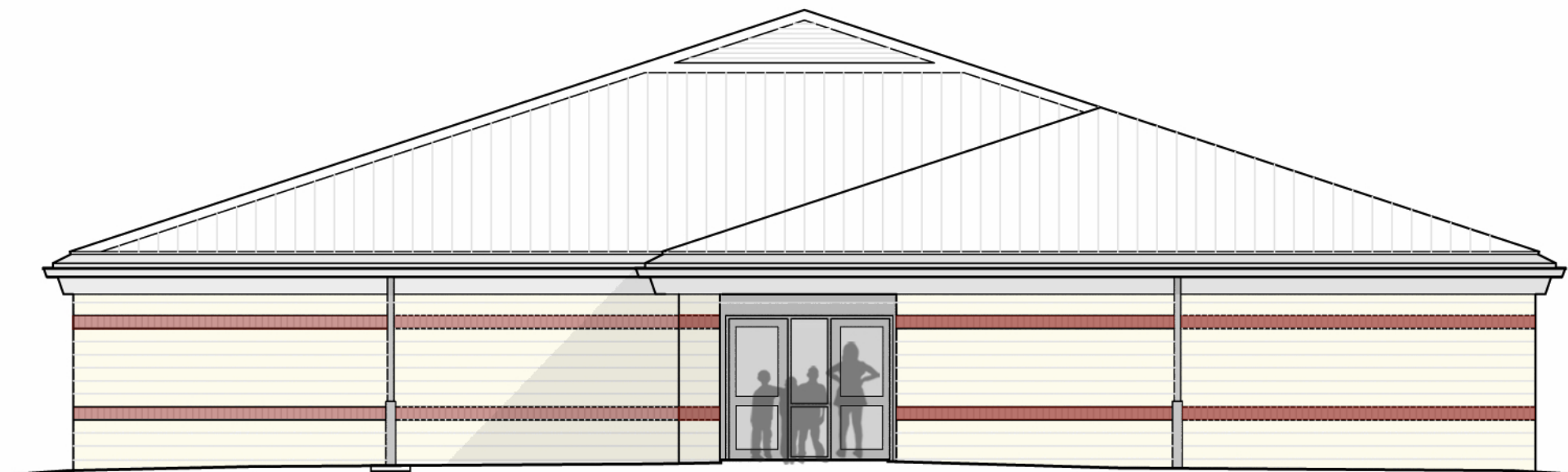
CORRIDOR / CLASSROOM ELEVATION



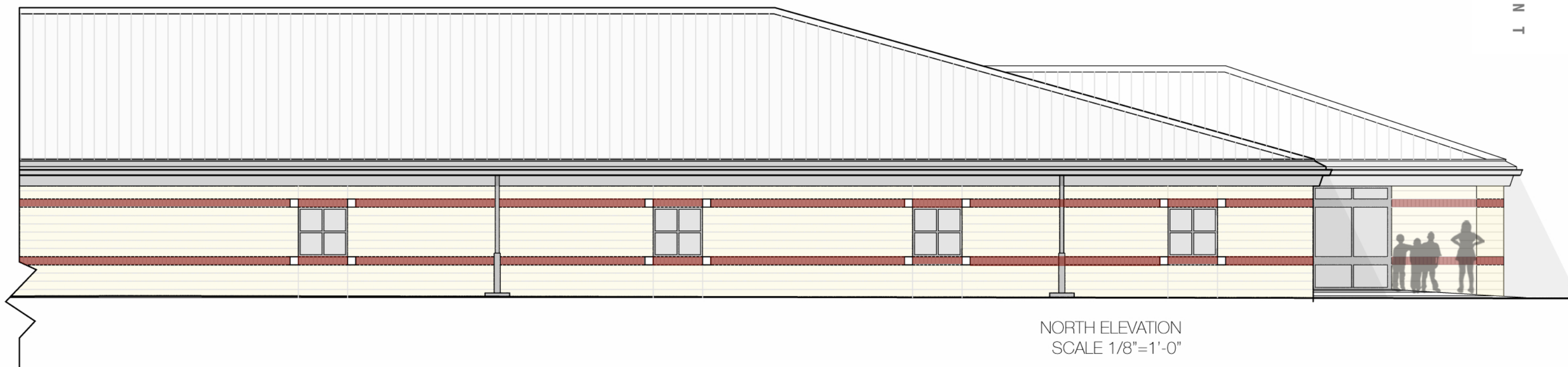
Oakwood Intermediate School
COLLEGE STATION I.S.D. COLLEGE STATION, TX



V L K | A R C H I T E C T S



WEST ELEVATION
SCALE 1/8"=1'-0"



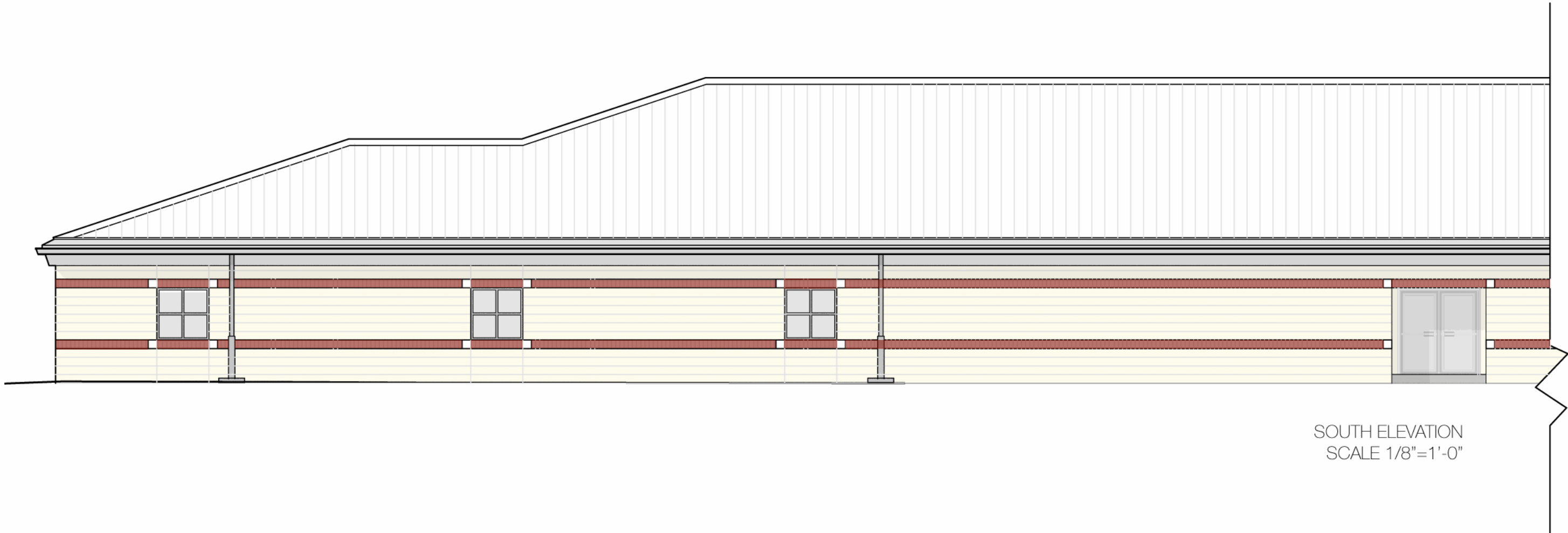
NORTH ELEVATION
SCALE 1/8"=1'-0"



A&M Consolidated Middle School
COLLEGE STATION I.S.D. COLLEGE STATION, TX



V L K | A R C H I T E C T S



SOUTH ELEVATION
SCALE 1/8"=1'-0"



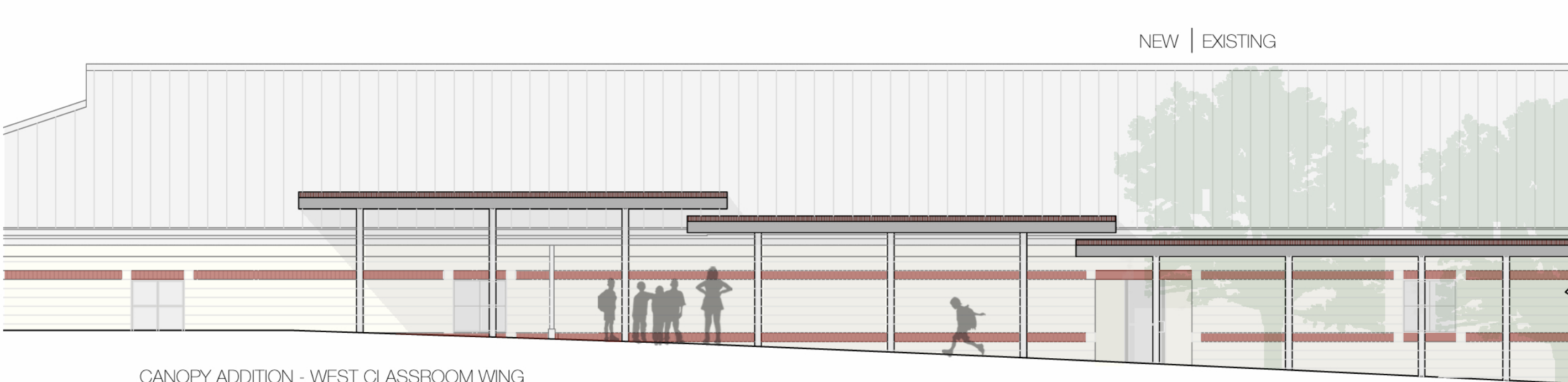
A&M Consolidated Middle School
COLLEGE STATION I.S.D. COLLEGE STATION, TX



V L K | A R C H I T E C T S



CANOPY ADDITION - MAIN ENTRANCE
SCALE 1/8"=1'-0"



CANOPY ADDITION - WEST CLASSROOM WING
SCALE 1/8"=1'-0"



A&M Consolidated Middle School
COLLEGE STATION I.S.D. COLLEGE STATION, TX



V L K | A R C H I T E C T S



Questions/Comments?