

College Station ISD

2007 Bond Program

Construction Update

April 14, 2008

Creek View Elementary School

Eagle Drive Extension - Looking from East to West



Photo taken 04/14/2008

Creek View Elementary School

Utility Infrastructure



Photo taken 04/14/2008

Creek View Elementary School

Utility Infrastructure



Photo taken 04/14/2008

Creek View Elementary School

Utility Infrastructure



Photo taken 04/14/2008

Creek View Elementary School

Concrete Piers



Photo taken 04/14/2008

Creek View Elementary School

Grade Beam Excavation, Steel & Forms



Photo taken 04/14/2008

Creek View Elementary School

Grade Beam Excavation, Steel & Forms



Photo taken 04/14/2008

Creek View Elementary School

Grade Beam Excavation, Steel & Forms



Photo taken 04/14/2008

Creek View Elementary School

Grade Beam Excavation, Steel & Forms



Photo taken 04/14/2008

Creek View Elementary School

Grade Beam Excavation, Steel & Forms



Photo taken 04/14/2008

Creek View Elementary School

Grade Beam Excavation, Steel & Forms



Photo taken 04/14/2008

Stadium Fieldhouse

New Concrete Masonry Unit (CMU) Exterior Walls



Photo taken 04/14/2008

Stadium Fieldhouse

Foundation and CMU Walls



Photo taken 04/14/2008

Stadium Fieldhouse

Locker Room CMU Walls



Photo taken 04/14/2008

Stadium Fieldhouse

Foundation and New Exterior CMU Walls



Photo taken 04/14/2008

Stadium Fieldhouse

New Exterior CMU Walls



Photo taken 04/14/2008

Tiger Field

Drainage and Subsurface



Photo taken 04/14/2008

Tiger Field

Drainage and Subsurface



Photo taken 04/14/2008

Tiger Field

Drainage and Subsurface



Photo taken 04/14/2008

Tiger Field

Drainage and Subsurface



Photo taken 04/14/2008

Tiger Field

Drainage and Subsurface



Photo taken 04/14/2008

Tiger Field

Visitor Rest Room Foundation



Photo taken 04/14/2008

Tiger Field

Curb Work on SE Corner of Track



Photo taken 04/14/2008

Tiger Field

Home Rest Room Foundation

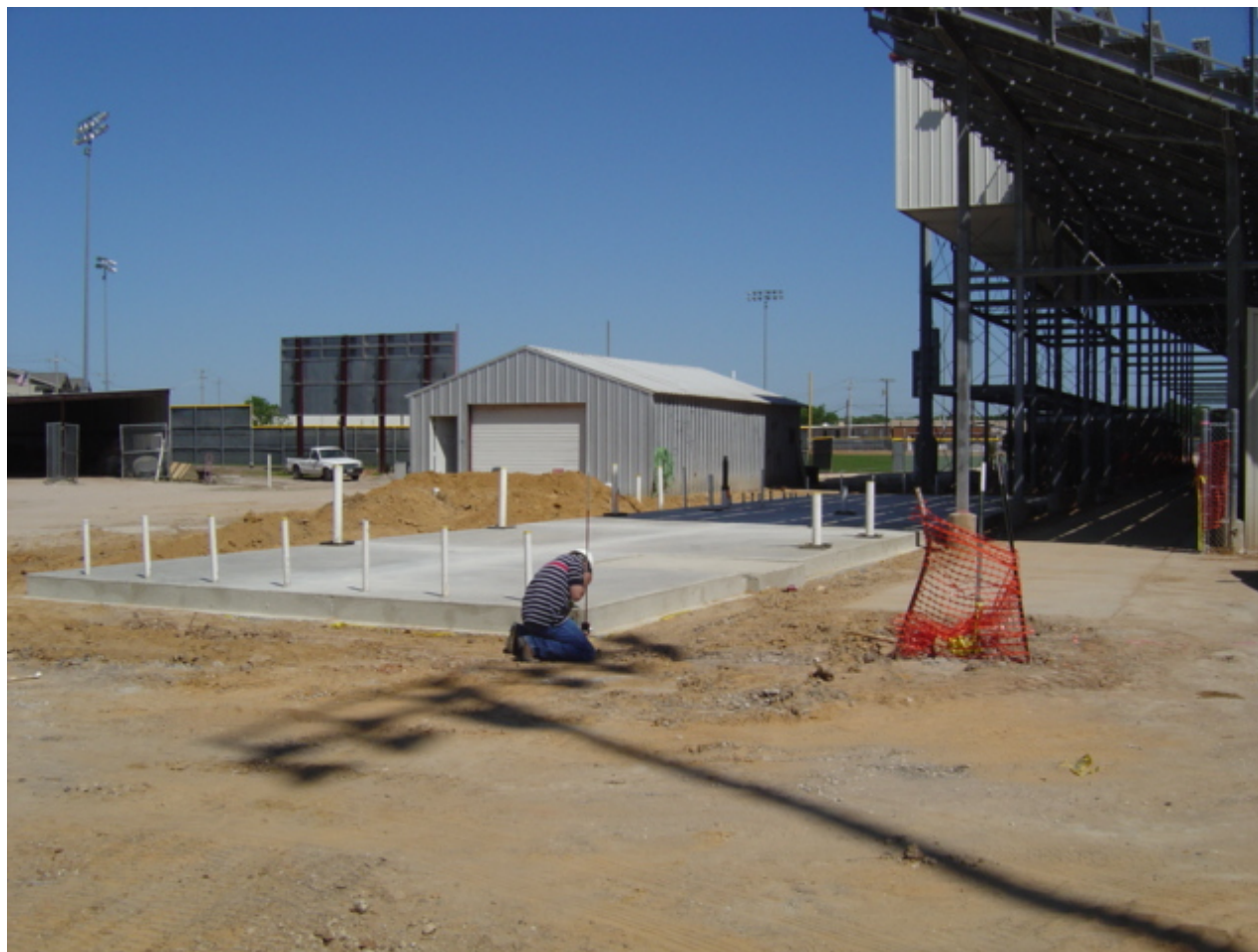


Photo taken 04/14/2008

Grounds Equipment Storage Facility Grade Beam Excavation & Forms



Photo taken 04/14/2008

Grounds Facility Office and Restroom Foundation



Photo taken 04/14/2008

Multi-Purpose Field House

Exterior CMU Walls



Photo taken 04/14/2008

Multi-Purpose Fieldhouse

CMU Walls



Photo taken 04/14/2008

Multi-Purpose Fieldhouse

Interior CMU Walls



Photo taken 04/14/2008